



A Maharatna Company

Community Development by NTPC around its operations

NTPC, India's largest power company, was set up in 1975 to accelerate power development in India. It is emerging as an 'Integrated Power Major' with a significant presence in the entire value chain of power generation business. Environment and social sustainability have always been the guiding spirit of NTPC's growth and performance.

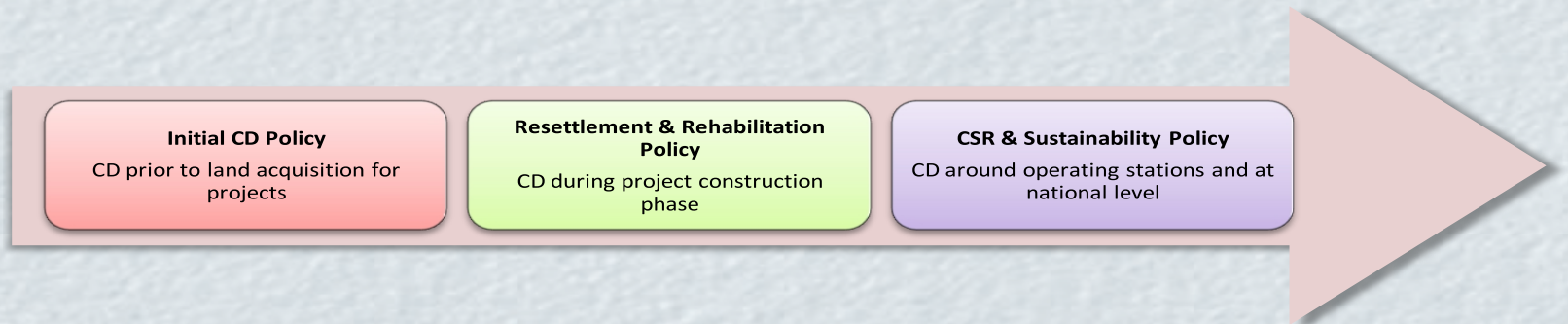
Corporate Social Responsibility (CSR) has been synonymous with NTPC's core business of power generation. NTPC's spirit of caring and sharing is embedded in its mission statement.

Corporate Objectives on CSR & Sustainability

- "To contribute to sustainable power development by discharging corporate social responsibilities"
- "To lead the sector in the areas of resettlement & rehabilitation and environment protection including effective ash-utilization, peripheral development and energy conservation practices"

NTPC has adopted a visionary approach towards its Corporate Social Responsibility since inception. Robust Structures, well laid out policies, and streamlined process guide our CSR initiatives benefitting more than a million people spread over about 500 villages in the neighbourhood of NTPC stations. **A member of UN Global Compact, an initiative of United Nations, NTPC is committed to adhere to its ten principles.**

Policies for Community and Sustainable Development



COMMITMENT FOR CSR & SUSTAINABILITY

"NTPC commits itself to contribute to the society, discharging its corporate social responsibilities through initiatives that have positive impact on society at large, especially the community in the neighbourhood of its operations by improving the quality of life of the people, promoting inclusive growth and environmental sustainability"

CSR Structure

A Committee of the Board for Corporate Social Responsibility has been constituted to recommend to the Board for approval, the amount of expenditure to be incurred on the activities and monitor from time to time the Corporate Social Responsibility Policy approved by the Board. Three-tier structure i.e Unit, Regional and Corporate Level is responsible for preparation of plans, implementation monitoring and reporting on CSR projects.

With a vision **"To serve and Empower the Physically Challenged and Economically Weaker Sections of the Society"** "NTPC Foundation", a charitable trust, set up by NTPC takes up projects and programmes addressing niche domains of socio-economic concerns and compliment CSR initiatives of NTPC.

NTPC encourages volunteering by its employees and their family members. Employees NGOs under the banner "Employee Voluntary Organization for Initiatives in Community Engagement (EVOICE)" also facilitate planning and implementation of the identified CSR projects, complimenting the CSR initiatives of NTPC.

Budget Allocation: Overall Allocation by Board of Directors – 2% of average net profit of previous 3 yrs . Allocation against specific activities by "Committee of Board for CSR & Sustainability"





“To lead the sector in the areas of resettlement & rehabilitation and environment protection including effective ash-utilization, peripheral development and energy conservation practices”

Community is the most important stakeholder and is a neighbor for lifetime, with whom NTPC has built strong partnerships through a well-conceived basket of community development interventions.

Focus areas of NTPC CSR are :

Health & Sanitation, Drinking Water, Education, Capacity Building, Women Empowerment, Social Infrastructure Development, Support to Physically Challenged Person (PCPs), Activities contributing towards environment sustainability

These initiatives are based on specific local requirements and guided by extensive Need Assessment Surveys and consultation with stakeholders through various participative forums like Village Development Advisory Committee, Rehabilitation and Periphery Development Advisory Committee etc.

EDUCATION

Key Initiatives:

- Setting up polytechnic at Kaladungi, Dist. Nainital, Uttarakhand.
- 20 Schools in Townships providing subsidized education primarily to community children benefitting about 20,000 students of neighbourhood areas.
- Every year, NTPC provides scholarship of Rs.4000/- per month for the entire duration of the course of study to Scheduled Caste / Scheduled Tribe / Physically Challenged students for pursuing Engineering Degree (100 Nos.), MBA/ PGDM and MBBS (30 Nos each).
- NTPC Sipat has sponsored about 180 no of students so far in the Chhattisgarh State Government scheme named Udaan that provides scholarships to Biaga Tribal students getting admission into engineering and medical colleges.
- Merit scholarship and Solar lanterns to about 2500 students every year.
- NTPC Utkarsh' - Merit Scholarship for students from the neighborhood of its projects /stations. The schemes will benefit about 7300 students every year from neighborhood communities pursuing X, XII, ITI, B.E / B.Tech and MBBS studies.

Activities like school infrastructure development, Female/ Girl Child Education, Adult Education, Coaching and personality development programs, Scholarships, Study material & uniforms etc benefited more than 150000 students during 2015-16.



Mobile Science Lab- Curiosity based Learning

Mobile Science Lab (MSL) is a vehicle fitted with LCD TV and it carries working Science Models emphasizing curiosity based learning for children. It is an initiative to revolutionize rural education and make hands-on learning accessible amongst disadvantaged children.

NTPC has initially deployed three Mobile Science Labs at its ongoing projects at Darlipalli, Pakri Barwadih and Kahalgaon.

Mobile Science Lab focuses on School Visits, Young Instructor's Program, Science Fairs, Activity Camps, Teacher Training

Each Mobile Science Lab covers a set of about 20 schools around NTPC project. With instructors from neighborhood community, Mobile science lab generates about 16000 student exposures per year. Over 3 year period, with three MSL, more than 1,40,000 students exposure will be generated resulting in children having increased level of curiosity and creativity.



HEALTH & SANITATION

Key Initiatives:

- 15 NTPC Hospitals provide health services to community at nominal charges
- Mobile health clinic covering 100 villages providing health care facility at doorsteps.
- Regular Medical Camps including general health checkup camps, family planning camps, de-addiction camps, camps for detection and treatment of respiratory diseases /TB/ cancer, eye check up camps organized at various locations. During the camps 4000 surgeries of various natures were performed during 2015-16..
- Activities like fogging, spraying anti larva spray are taken up for preventive health measures.
- Animal Health Camps & other animal health related activities were organized benefitting populations of more than 30 villages.
- Directly Observed Treatment cum Designated Microscopy Centre (DOTs cum DMC) with Mobile ambulance operational through NTPC Foundation at 11 NTPC hospitals under Revised National Tuberculosis Control Programme (RNCTP), catering to villages upto 25-30km, benefited about 5600 patients during 2015-16.

Activities like Mobile Health Clinics, Operations, Family Planning camps, Fogging/spraying, De-addiction camps/ Programs, Health related infrastructure etc in neighbourhood villages benefitted more than 250000 individuals during 2015-16. Sanitation related activities include Surface Drains and Toilets in neighbourhood villages.

PHOTOS & CASE STUDY RELATED TO HEALTH

MEDICAL OUTREACH

Access to basic healthcare is a cornerstone of NTPC's CSR policy. NTPC's own hospitals & dispensaries in its townships extend medical care & treatment to the local villagers. As a unique initiative, NTPC has deployed custom built, state of the art Mobile Health Clinic with diagnostic facilities to reach out and deliver primary healthcare to underprivileged sections of society in remote villages and take up activities related to health awareness.



SWACHH BHARAT ABHIYAAN

In response to clarion call by Hon'ble Prime Minister for Swachh Bharat, NTPC whole heartedly came forward for realizing this dream. Constructed about 29000 toilets in about 16000 schools covering 83 districts spread over 17 states with an expenditure of about Rs. 300 in FY 2014-15 and 2015-16 under CSR.



CAPACITY BUILDING & WOMEN EMPOWERMENT

Key Initiatives:

- Adoption of 18 ITIs and setting-up 08 new ITIs
- Construction of Ladies waiting room & purchase of furniture at Government Women's Polytechnic Nedupuzha, Thrissur Kerala.
- Support to Chanderi Development Society for Handloom Weavers for construction of Weavers Blocks of Common Facility Centre (CFC) in Handloom Park at Chanderi, District Ashok Nagar, MP.
- MoU with NSDC for Skill Development of 30000 persons around NTPC Projects
- One floor each in Girls Hostel in two Dist of Ongole and Guntur, AP.

Programmes like Computer training, Motor Driving, General Electrical Repairing, Motor rewinding, fitter, refrigeration etc and Skill upgradation programs for women, to promote self-employment, include Cutting, Tailoring, Stitching, Dress Designing, Beautician etc benefitted around 4500 individuals during 2015-16.

PHOTOS & CASE STUDY RELATED TO CAPACITY BUILDING



Basket making training in Rihand

SKILL DEVELOPMENT PROJECTS IN THE VICINITY OF NTPC PROJECTS/ STATIONS THROUGH NSDC

To support the skill development agenda in the country, based on discussions held with Ministry of Skill Development, NTPC has entered into a MoU with NSDF and NSDC for Skill Development initiatives near our projects under CSR. Under this initiative NSDC will train 30000 persons around NTPC stations.

The multi skill training centre has started functioning at Talcher Kaniha, Distt.- Angul(Odisha) with 03 courses namely 1. Trainee Associate (Retail Sector); 2. BPO - Voice/ Non-Voice (IT/ITES Sector) and 3. Customer Care (Telecom Sector).



Inauguration of Training Center at Angul, Odisha



Training underway in NTPC Angul

ADOPTION OF ITIs

The Industrial Training Institutes (ITIs) are backbone of Vocational education in India and they provide the workforce required for doing the skilled jobs in the Industry.

In order to address the issue of mismatch between the trained manpower produced by ITIs and those required by the industry, NTPC has adopted 18 existing Govt. ITIs. In these ITIs, new trades relevant to the local Industry are being added. Instructors are trained to provide better education. Classrooms and institute buildings are repaired. New machinery is purchased for laboratories and workshops. Libraries of the ITIs are being provided with new books.

Total 1831 new seats have been added by opening new trades in the 18 adopted ITIs and 8 new ITIs being set up as part of project development.

About 10200 students trained from these ITIs have got placements.



ITI at Jhajar

DEVELOPMENT OF INFRASTRUCTURE

Key Initiatives:

- Installation of about 1360 Solar Street Lights in FY 2015-16 at villages in Rampur tehsil of Shimla Distt. HP and in Pilibhit, Uttar Pradesh and other locations in India to promote use of renewable energy.
- Installation of 31 High Mast Lights/ street lights in FY 2015-16 for improved lighting covering rural areas.
- Comprehensive village development including Drinking Water, Sanitation, Education and Health Infrastructure in six villages, 3 villages each in Bhagalpur and Godda District
- Support for construction of Community Parivarthana Bhavans in select mandals for the benefit of SC/ST persons of Prakasam & Guntur Districts of AP.
- Construction of 23 Community Centres in FY 2015-16.

Stations also takes up activities related to construction of Community Halls/ Buildings/ Centre, Anganwadis, Local Markets, Panchayat Ghar, Cremation ground, bus shelters, Construction and Deepening of Ponds, Lakes & Bathing Ghats etc.

IMPLEMENTING CLEAN LIGHTING AND COOKING SOLUTIONS THROUGH IDES (INTEGRATED DOMESTIC ENERGY SYSTEM)

- To disseminate clean lighting and cooking solutions through establishment of IDES (Integrated Domestic Energy System) NTPC has provided 1000 numbers of IDES in the district of Chatarapur, Madhya Pradesh around Barethi plant of NTPC and in the villages situated within Satkosia Gorge Wild Life Sanctuary in Odisha. Training provided to local technicians for the installation and operation of the systems. For operation and maintenance Energy Enterprise (EE) established at local level.

Deliverables:

- Households illuminated by the provisioning of improved solar lighting
- Replacement of fossil fuel with Solar energy
- Fulfilment of NTPC's CSR objective by bringing light into lives of rural communities



Households illuminated by the provisioning of solar lighting services

PROVIDING DRINKING WATER

Key Initiatives:

- Installation of about 120 hand pumps in Bihar (Arrah and Darbhanga districts) and other locations near NTPC operations in FY 2015-16.
- Installed about 80 tubewells/ borewells, about 20 RO plants and 780 water filters at various villages/schools near NTPC operations in FY 2015-16.
- During extreme summers water supply through water tankers relieved close to 40 villages.
- 30 piped water schemes and renovation & deepening of about 20 water bodies have been taken up in FY 2015-16.

Installation of pumps, Piped water system, Over Head Tanks, RO Plants, Drinking water tankers, digging of bore wells etc - around stations covered close to 150 villages During 2015-16.

Support for Physically Challenged Persons (PCPs):

Key Initiatives for Physically Challenged Persons:

- Information and Communication Technology (ICT) centres for PCPs
- Disability Rehabilitation Centre (DRC) at 5 locations in collaboration with National Institute of Orthopedically Handicapped (NIOH).

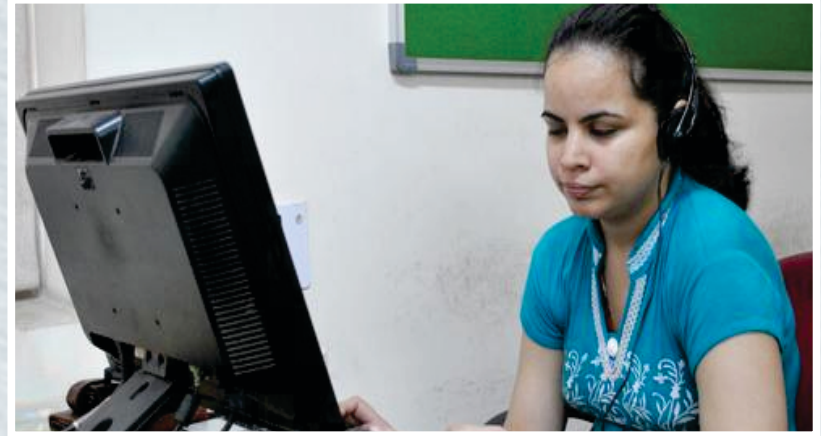
Different stations activities related to Inclusive education, Reimbursement of Fees, Distribution of Aids and Equipment, Blind Relief Work, Camps for PCPs and activities through NTPC Foundation etc have benefited about 8000 PCPs during 2015-16.

INFORMATION AND COMMUNICATION TECHNOLOGY (ICT) CENTRES

In order to alleviate the disadvantage of disabled persons, NTPC Foundation has set up ICT Centres, equipped with latest assistive softwares & devices for persons with visual / mobility / hearing impairment & others.

These centres have been set up jointly with University of Delhi, Gauhati University Guwahati, Devi Ahilya Vishwavidyalaya, Indore and blind schools in Lucknow, Ajmer, Thiruvananthapuram and Mysore.

About 2200 persons have benefited till 2015-16 from these ICTs.



DISABILITY REHABILITATION CENTRE (DRC)

For providing services to Physically Challenged Persons in the area of rehabilitation, restorative surgery, fitting of artificial aids & appliances and therapeutic services etc, NTPC Foundation has set up DRC at NTPC Tanda, Rihand, Korba, Dadri and Bongaigaon in collaboration with National Institute for the Orthopaedically Handicapped. About 38800 persons have benefited till 2015-16 from these DRCs



Promotion of Art and Culture & Sports

Promotion of Art and Culture & Sports in rural areas is one of the key thrust areas of NTPC.

Key Initiatives

- Conservation of 3 monuments through Archeological Survey of India (ASI)
- NTPC has taken up various art & culture activities covering 120 during 2015-16.
- Rural Sports Meet and various sports events covered nearly 300 schools in about 285 villages during 2015-16.

Awards and Commendations:

NTPC has regularly been conferred various awards and commendations in the area of CSR giving conviction that its CSR initiatives are moving in the right direction and motivates to continue these efforts for the betterment of the community at large. During 2015-16 NTPC received following awards:

- Greentech CSR Award Platinum Award 2015 in Power Sector for outstanding achievement in CSR
- Golden Globe Tiger Award 2016 for CSR Activities during 2015-16:
(1) Best Corporate Social Responsibility Practices
(2) CSR Leadership Award