



A Maharatna Company

To be the world's largest and best power producer, powering India's growth



“We value the partnerships we build with the communities around our units. For us Corporate Social Responsibility is Corporate Social Relationship.”

- Arup Roy Choudhury, CMD, NTPC Ltd.

Corporate Social Responsibility – The NTPC Way

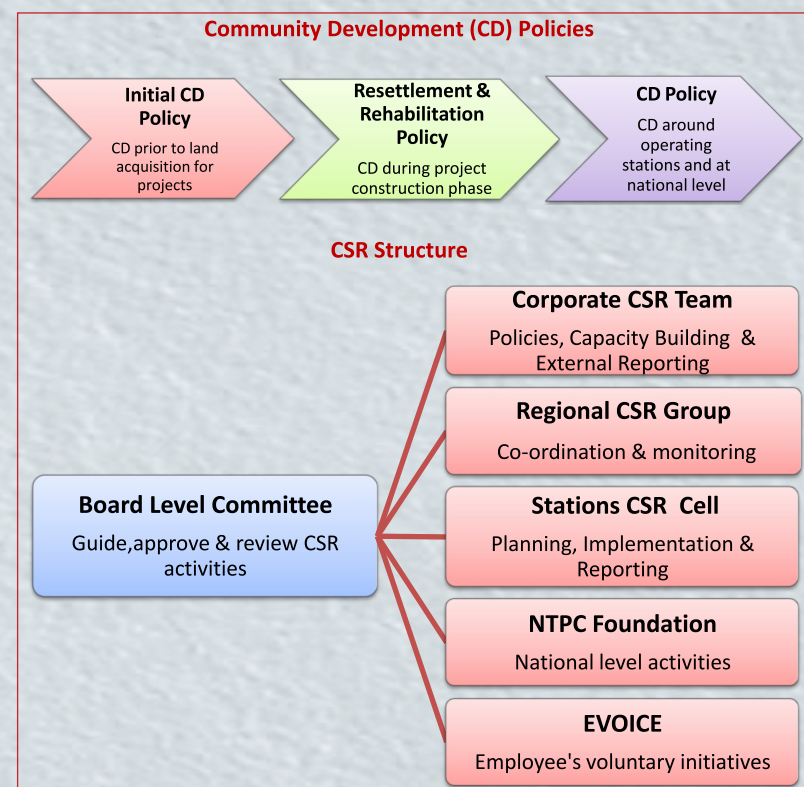
NTPC, India's largest power company, was set up in 1975 to accelerate power development in India. It is emerging as an „Integrated Power Major“ with a significant presence in the entire value chain of power generation business. Environment and social sustainability have always been the guiding spirit of NTPC's growth and performance. Amongst world's cleanest fossil fuel based power generators, NTPC has been playing a major role in meeting power needs of the country and contributing to its economic and social development. Corporate Social Responsibility (CSR) has been synonymous with NTPC's core business of power generation. NTPC aspires to provide access to resources needed for a decent standard of living for the people in the vicinity. NTPC's spirit of caring and sharing is embedded in its mission statement

CSR Objectives

- To lead the sector in environment protection including effective ash utilization, peripheral development and energy conversation practices.
- To lead the sector in the area of resettlement and rehabilitation.
- To contribute to sustainable power development by discharging g corporate social responsibility

NTPC has adopted a visionary approach towards its Corporate Social Responsibility since inception. Robust Structures, well laid out policies, and streamlined process guide our CSR initiatives benefitting more than a million people spread over about 500 villages in the neighbourhood of NTPC stations. A member of UN Global Compact, an initiative of United Nations, NTPC is committed to adhere to its ten principles. With a vision "To serve and Empower the Physically Challenged and Economically Weaker Sections of the Society" "NTPC Foundation", a charitable trust, set up by NTPC takes up projects and programmes addressing niche domains of socio-economic concerns and compliment CSR initiatives of NTPC. NTPC encourages volunteering by its employees and their family members. Employees NGOs under the banner "Employee Voluntary Organization for Initiatives in Community Engagement (EVOICE)" also facilitate planning and implementation of the identified CSR projects, complimenting the CSR initiatives of NTPC.

Community is the most important stakeholder and is a neighbor for lifetime, with whom NTPC has built strong partnerships through a well-conceived basket of community development interventions. NTPC's Community Development initiatives are primarily in focus areas of Education, Health & Sanitation, Capacity building & Women empowerment, Development of social infrastructure ,Providing drinking water, Promotion of arts ,culture & sports, Support for physically challenged persons etc. These initiatives are based on specific local requirements and guided by extensive Need Assessment Surveys and consultation with stakeholders through various participative forums like Village Development Advisory Committee, Rehabilitation and Periphery Development Advisory Committee etc. Engagement of community in CSR initiatives inculcates a sense of ownership among people and plays a vital role in smooth and successful implementation of schemes.



Develop and provide reliable power, related products and services at competitive prices, integrating multiple energy sources with innovative and eco-friendly technologies and contribute to society

Education

Education is the foundation and building block for achieving national objectives for building a more inclusive, equitable and sustainable society. Education is a unique present investment for future. NTPC earmarks 15%-20% of CSR-CD budget for education.

Key Initiatives :

- Setting up polytechnic at Kaladungi, Dist. Nainital, Uttarakhand.
- Subsidized education to children of about 20 schools run by NTPC predominantly for community children, benefitting about 20,000 students of neighbourhood areas.
- Identified Value Education Initiative for students of schools, affiliated with Central Board of Secondary Education, teachers & parents.
- Merit scholarships to more than 2600 students every year.
- Support for classrooms and Solar Street lights at Sadhana Vidyalaya, village Kannamangala, Ramnagara District, Karnataka and extension building of Shirdi Sai Baba School, Faridabad.
- Support to Cluster Innovation Centre (CIC) of Delhi University for 16 Educational Projects for Social Sensitization by students of B. Tech (Humanities), Delhi University.
- Solar lanterns distributed to nearly 2200 students during last two years.
- 44 toilet blocks constructed for girls at various locations recently.



On regular basis, stations also take up activities related to development of school infrastructure, Female/ Girl Child Education, Adult Education, Coaching and personality development programs, providing Scholarships,

Study material & uniforms etc to deserving students. Such activities benefited more than 65,000 students during 2013-14.

Health & Sanitation

Good health is essential to human welfare and to sustained economic and social development. NTPC strives to provide access to basic infrastructure for health, sanitation and hygiene.

Key Initiatives :

- Support to Impact India Foundation for "Lifeline Express Project" (camp) in Distt. Raebareli, U.P for curative interventions for disabled poor by general treatment & various surgical operations.
- Support to District Hospital, Aurangabad, Bihar for procurement of medical equipments for modular ICU.
- Support committed for development of New Block at King George Hospital, Visakhapatnam.
- Support for specialized Eye Centres at Bhubneswar Eye Hospital, Odisha, Medical equipments for Uttaranchal Forest Hospital and Alappuzha Medical College Hospital, Kerala.
- Mobile health clinic operational at 7 locations covering 80 villages providing healthcare facility at doorsteps to more than 60000 people.
- Constructed 45 Individual toilets & 06 community toilets to improve sanitation recently.
- More than 100 Animal Health Camps & other animal health related activities organized covering more than 100 villages during 2013-14.
- Directly Observed Treatment cum Designated Microscopy Centre (DOTs cum DMC) with Mobile ambulance facilities being operated at 12 NTPC hospitals under Revised National Tuberculosis Control Programme (RNCTP) that cater to villages upto 25-30Km have benefited about 5000 cases so far.

Stations regularly take up health and sanitation related activities like Health Camps & Operations, Family Planning camps, De-addiction camps/ Programs, Health related infrastructure surface drain & Toilet's in neighbourhood villages besides providing subsidized medical facilities to surrounding community. During 2013-14, About 1200 Medical Health checkups Camps and about 365 Eye camps organized at various locations and more than 2000 surgeries of various natures benefitting more than 165000 individuals.

Medical Outreach

Access to basic healthcare is a cornerstone of NTPC's CSR policy. NTPC's own hospitals & dispensaries in its townships extend medical care & treatment to the local villagers.

As a unique initiative, NTPC has deployed custom built, state of the art Mobile Health Clinic with diagnostic facilities to reach out and deliver primary healthcare to underprivileged sections of society in remote villages and take up activities related to health awareness.



Capacity Building & Women Empowerment

Capability Building is key to livelihood opportunities. Women empowerment enables women to move from periphery to centre stage in social, political and economic terms. NTPC promotes policies and programmes that focus on enhancing capability, improving equity and increasing social sustainability.



Key Initiatives:

- > 36 Weeks Training Program for 41 Jammu & Kashmir Youth in Thermal Power Plant Engineering under Special Industry initiative—Udaan.
- > Skill up gradation training in backward districts identified under BRGF of Planning commission for improving employability benefitting 1388 village youth/ women.
- > Assistance committed to Chanderi Development Society for Handloom Weavers for Weavers Blocks of Common Facility Centre (CFC) in Handloom Park at Chanderi, District, Ashok Nagar, MP.
- > Construction of double storey building in women's Polytechnic, Kayamkulam, Kerala.
- > Construction of Ladies waiting room & purchase of furniture at Government Women's Polytechnic Nedupuzha, Thrissur, and Kerala.
- > One floor each in Girls Hostel in two Dist of Ongole and Guntur, AP.
- > Bicycles provided to 8000 poor & indigent school going girls in West Bengal during 2013-14.

Stations take up Vocational Training programmes like Computer training, Motor Driving, General Electrical Repairing, Motor rewinding, mobile repairing, fitter, refrigeration & air conditioning repair, masonry, shuttering etc. Skill upgradation programs for women, to promote self-employment, include Cutting, Tailoring, Stitching, Dress Designing, Beautician, Embroidery, Food Preservation/ Processing. All these activities have benefited around 3,200 individuals during 2013-14.



Adoption of ITIs

The Industrial Training Institutes (ITIs) are backbone of Vocational education in India and they provide the workforce required for doing the skilled jobs in the Industry.

In order to address the issue of mismatch between the trained manpower produced by ITIs and 8 new ITIs being set up as part of Project development those required by the industry, NTPC has adopted 17 existing Govt. ITIs. In these ITIs, new trades relevant to the local Industry are being added. Instructors are trained to provide better education. Classrooms and institute buildings are repaired. New machinery is purchased for laboratories and workshops. Libraries of the ITIs are being provided with new books.

24 new trades have been started and 1595 new seats have been added in the adapted ITIs. About 19500 students have obtained technical training from these ITIs and about 6000 have got placements.



Development of Infrastructure

Certain services and facilities are absolutely essential for life to move on, thus follows infrastructural support for the rural people. Involvement of NTPC stations in rural lives is not just restricted to service provision; but also extended in a more holistic way.

Key Initiatives :

- > More than 500 Solar Lights and about 50 high Mast Lights in various states.
- > 5 Km road from NH-200 to State Highway-63 in Angul & Talcher subdivision.
- > Area lighting around Shri Jagannath Temple, Puri.
- > Comprehensive village development including Drinking Water, Sanitation, Education and Health Infrastructure in six villages, 3 villages each in Bhagalpur and Godda District
- > Laying of cement concrete road in various villages in district Chhindwara, MP.
- > Construction of culvert over Pikia Nala at Pakaaria Ghat, Sant Kabir Nagar, UP.
- > Support for construction of Community Parivarthana Bhavans in the select mandals for catering to the needs of SC/ST persons of Prakasam & Guntur Districts of AP.
- > Conservation of selected National Monuments in association with Archaeological Survey of India.

Stations also takes up activities related to construction of Community Halls/ Buildings/ Centre, Anganwadis, Local Markets, Panchayat Ghar, Cremation ground, bus shelters, Construction and Deepening of Ponds, Lakes & Bathing Ghats etc. Regular infrastructure related CSR activities during 2013-14 in the villages around NTPC stations covered more than 110 villages.

Providing Drinking water :

Water is a natural resource, fundamental to life, livelihood, food security and sustainable development. People's health condition in any region, can be directly related to the quality of water. NTPC complements the efforts of the Central and State Governments in meeting the safe drinking water needs of rural and under-privileged people around its stations.

Key Initiatives:

- > Installation of about 500 hands pumps & bore wells in Jharkhand (Garhwa and Dhanbad districts); Uttar Pradesh (Raebareli, Siddharth Nagar, Jaunpur and Santravidas Nagar districts) and Bihar (Arrah and Darbhanga districts).
- > Piped Drinking Water System to neighbourhood of Talcher Kaniha and Thermal, Odisha.
- > Piped water scheme and RO plants provided at 11 locations.
- > A total of about 150 bore-wells were sunk and hand pumps installed at various locations during last two years.
- > During extreme summers supply of water through water tankers relieved close to 32000 individuals.

Stations regularly take up drinking water related activities like installation of pumps, Piped water system, Over Head Tanks, RO Plants, Drinking water tankers, digging of bore wells etc. During 2013-14 regular water related CSR activities around its stations covered close to 130 villages.



Providing RO water in villages

One of the major requirements of villages around NTPC stations is availability of safe and pure drinking water. Village Quality Circles (QC) at Ramagundam requested NTPC for providing RO Plants in their villages. Villagers identified suitable land for installation of RO Plant in their Villages.

NTPC constructed the Shed for housing the RO plant, installed equipment and handed over the RO Plant to Village Development Committee or QC who run the plant and provide drinking water to the residents of village at nominal charge covering operating and maintenance costs. About 11000 people are benefiting from the 2 RO plants installed in villages around Ramagundam.



Promotion of Art and Culture & Sports

In order to promote of Art and Culture & Sports NTPC has taken up various cultural and sports activities in nearby villages.

Support for Physically Challenged Persons (PCPs):

Around 70-80% of the person's with disability live in rural areas while most of the support systems are in urban areas. NTPC Foundation, registered in December 2004, is engaged in serving and empowering the physically challenged and economically weaker sections of the society.

Different stations activities related to Inclusive education, Reimbursement of Fees, Distribution of Aids and Equipment, Blind Relief Work, Camps for PCPs and activities through NTPC Foundation etc have benefited more than 4,000 PCPs during 2013-14.

Information and Communication Technology (ICT) Centres

In order to alleviate the disadvantage of disabled persons, NTPC Foundation has set up ICT Centres, equipped with latest assistive softwares & devices for persons with visual / mobility / hearing impairment & others.

These centres have been set up jointly with University of Delhi, Gauhati University Guwahati, Devi Ahilya Vishwavidyalaya, Indore and blind schools in Lucknow, Ajmer, Thiruvananthapuram and Mysore.

About 2000 persons have benefited so far from these ICTs.



Disability Rehabilitation Centre (DRC)

For providing services to Physically Challenged Persons in the area of rehabilitation, restorative surgery, fitting of artificial aids & appliances and therapeutic services etc, NTPC Foundation has set up DRC at NTPC Tanda, Rihand, Korba, Dadri and Bongaigaon in collaboration with National Institute for the Orthopaedically Handicapped.

About 15000 persons have benefited so far from these DRCs.



Awards and Commendations:

NTPC has regularly been conferred various awards and commendations in the area of CSR giving conviction that its CSR initiatives are moving in the right direction and motivates to continue these efforts for the betterment of the community at large. During 2013-14 NTPC received Golden Peacock Award 2013 for CSR, ASSOCHAM CSR Excellent Award 2013 - Appreciation certificate and FICCI CSR Award 2012-13 – Special Jury Commendation.