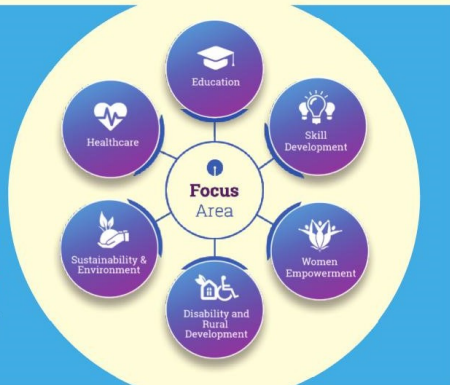


SBI Foundation is a CSR arm of State Bank of India, launched to undertake CSR activities of the Bank and its subsidiaries with a vision to improve the socio-economic wellbeing of the society, particularly of the less fortunate and underprivileged members and enable them to live up to the potential that they all possess. Through the SBI Foundation, SBI aims to continue with its tradition of service beyond banking.

# 6

## Focus Areas and it's Explanation

SBI Foundation works in six focus areas with a mission to make resources available to the most vulnerable sections of the society directly and through strategic partnerships/collaborations with impact making entities in the social and development sector in the most transparent way to create inclusive sustainable development.



### Working towards a Brighter Future.

India is on the verge of becoming the youngest country by the year of 2020 with 64% of the population falling under the working age bracket. With such a high potential, it is necessary to channelize this energy towards the sustainable development of the country. Our country's urban areas are reaching new milestones in development every day and on the other hand, most of our rural areas are underdeveloped. Majority of households in rural India lacks basic amenities like availability of drinking water, electricity, infrastructure, education tools, etc.

**SBI Youth for India** is a fellowship program initiated, funded and managed by the SBI Foundation. It provides a framework for India's best young minds to join hands with rural communities, empathize with their struggles and connect with their aspirations. Under the initiative, SBI Foundation has partnered with the reputed NGOs, engaged in development work in rural areas, to deploy the youth enrolling for the fellowship, for conceiving and working on innovative projects. YFI has an alumni base of 184 passionate change makers, 60% of Alumni are associated with the development sector after the fellowship. Every year 100 fellows are enrolled to undertake innovative projects to benefit the rural community. The current batch of fellows are working at 35 locations across 12 states of India.

SBI Foundation has initiated **SBI Gram Seva**, a flagship program for holistic development of the villages through adoption of Gram panchayats. Under this program 10 Gram Panchayat has been adopted, covering 50 villages in 6 states of India. The objectives of the flagship program are:

- To link and leverage the specific government schemes/services to villages (families)
- To lay emphasis on digitization and create awareness about online service (including online banking)
- Improve the basic infrastructure of villages, encourage Panchayat/Village self-governance and create environment for participatory efforts by the people for rural asset creation, community development etc.



In a world striving for inclusion, some people continue to remain on the fringes. Discrimination against the disabled is still ingrained in our society. Majority of persons with disabilities can lead a better quality of life if they have equal opportunities and effective access to rehabilitation measures. **Centre of Excellence for PwDs (CoE)** is one of SBI Foundation's flagship programmes. It was conceptualised with a goal to be a centralised support centre for persons with disabilities.

Centre of Excellence primarily works on empowering PwDs through skill enhancement to make a significant and measurable improvement that enables individuals to enjoy a more productive and satisfying life by optimising their cognitive, physical, social and vocational functioning. CoE has conducted 5 inclusive training programs for employees with disabilities and their trainers. Seven public sector Banks participated in the training program. CoE has signed MoU with Bank of Baroda and Union Bank of India for institutionalisation of inclusion and empowerment of employees with disabilities. CoE has set up 3 skilling centres in various cities for placement linked skill development of PwDs.



### No One Remains of Education

Education is one of the most powerful and proven vehicles to bring transformational change in the development landscape. The scarcity of resources and lack of infrastructure are the major hindrances in the education sector in India. SBI Foundation has initiated various projects in the focus area of education. One of the key project is 'Gyanshala' in partnership with Education Support Organisation (ESO) to further the common goal of providing quality education to slum children and with the help of this project 2150 out-of-school/slum children would receive high quality middle school education, and would attain learning attainments comparable to CBSE schools.



The Gyanshala model has the potential to make a significant impact on education policy, as well as other schools for improving education quality therein.

### Augmenting Deceased Organ Donation in India.

The vast majority of rural population is deprived of basic medical facilities due to lack of healthcare infrastructure in these parts of the country. SBI Foundation has initiated various projects under the focus area of Healthcare. 'Gift Hope, Gift Life' is one of our projects under the focus area of healthcare to augment the deceased Organ Donation scenario in India. Organ transplantation helps many patients getting a renewed lease of life. But in India, organ failure patients have not greatly benefited from this advancement due to lack of awareness and lack of skilled manpower. Through this initiative, SBI Foundation in association with Mohan Foundation is setting up organ donation programs in new States, providing training to Doctors, Volunteers, and Nurses. We have set up National Helpline (18001037100) for Organ donation to provide service which offers information, support, guidance, and referral for all those concerned with any aspect of organ donation and transplantation. This service is available in 8 languages. To spread awareness about organ donation, SBI Foundation has supported a road trip from Mumbai to London covering almost 22,000 Kms, and 5 countries to motivate and sensitize people across countries about the cause of organ donation which can save lives. SBI Foundation aims to ensure that every Indian suffering from end-stage organ failure is provided with the Gift of Life through this project.



### Grant Allocation (2017-18)

Healthcare	9%
Rural Development	55%
Education	9%
Disability	5%
Environment	2%
Culture, Arts & Sports	21%

### Grant Amount and Allocation:

**Grant Amount:**  
2016-17: Rs. 20.00 crores  
2017-18: Rs. 22.48 crores  
2018-19: Rs. 25.71 crores